

HC-EVO-B06PT-BWSC-HL-M20-PLRBK - Connector set



1407710

<https://www.phoenixcontact.com/in/products/1407710>

Please be informed that the data shown in this PDF document is generated from our Online Catalog. Please find the complete data in the user documentation. Our General Terms of Use for Downloads are valid.



EVO connector set, B6 series, plastic housing, consisting of: 1407727, 1407728, 1407622, 1407619, 1407669, plastic housing

Your advantages

- Lower costs than metal version
- Labeling option using 9 x 20 mm marking label
- Low weight
- Lower risk of condensation

Commercial Data

Item number	1407710
Packing unit	1 pc
Minimum order quantity	1 pc
Sales Key	BF7
Product Key	BF7AFX
Catalog Page	Page 646 (C-2-2019)
GTIN	4046356777759
Weight per Piece (including packing)	315.8 g
Weight per Piece (excluding packing)	315.1 g
Customs tariff number	85366990
Country of origin	CN

HC-EVO-B06PT-BWSC-HL-M20-PLRBK - Connector set



1407710

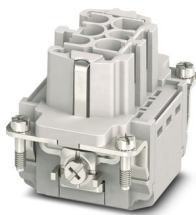
<https://www.phoenixcontact.com/in/products/1407710>

Set consists of

HC-B06-I-PT-F - Contact insert

1407727

<https://www.phoenixcontact.com/in/products/1407727>

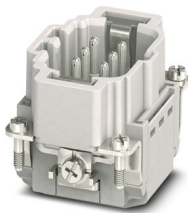


Contact insert, number of positions: 6+PE, size: B6, number of connections per position: 1, Socket, Push-in connection, 500 V, 16 A, 0.14 mm² ... 2.5 mm², application: Power

HC-B06-I-PT-M - Contact insert

1407728

<https://www.phoenixcontact.com/in/products/1407728>



Contact insert, number of positions: 6+PE, size: B6, number of connections per position: 1, Pin, Push-in connection, 500 V, 16 A, 0.14 mm² ... 2.5 mm², application: Power

HC-EVO-B06PT-BWSC-HL-M20-PLRBK - Connector set



1407710

<https://www.phoenixcontact.com/in/products/1407710>

HC-EVO-B06-BWSC-PLRBK - Housing

1407622

<https://www.phoenixcontact.com/in/products/1407622>



Panel mounting base B6, with single locking latch, material: PA, protective cover material: PC, height: 30.5 mm, cable gland: none, protective cover: yes, Standard, with flat gasket

HC-EVO-B06-HLFS-PLBK - Housing

1407619

<https://www.phoenixcontact.com/in/products/1407619>



HEAVYCON EVO sleeve housing, plastic, with bayonet flange for EVO screw connection, B6, for single locking latch, height: 60.5 mm, without EVO screw connection

HC-EVO-B06PT-BWSC-HL-M20-PLRBK - Connector set



1407710

<https://www.phoenixcontact.com/in/products/1407710>

HC-B-G-M20-PLRBK - Cable gland

1407669

<https://www.phoenixcontact.com/in/products/1407669>



EVO plastic cable gland with bayonet locking, for housing series B, size M20, cable diameter: 7 mm ... 13 mm

HC-EVO-B06PT-BWSC-HL-M20-PLRBK - Connector set



1407710

<https://www.phoenixcontact.com/in/products/1407710>

Technical Data

Product properties

Type	B6
Product type	Connector set
Number of positions	6
Connection profile	6+PE
Contact numbering	1 - 6
No. of cable outlets	1
Type of the screw connection	1x M20
Housing type	Complete housing
Protective cover	yes
Locking type	Single locking latch
Series	HC-B
Cable outlet	straight
Pg screw connection	none

Insulation characteristics

Overvoltage category	III
Degree of pollution	3

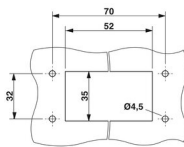
Electrical properties

Rated voltage (III/3)	500 V
Rated surge voltage	6 kV
Rated current	16 A

Connection data

Connection method	Push-in connection
Connection technology	Push-in connection
Conductor cross section	0.14 mm ² ... 2.5 mm ² (with ferrule) 0.14 mm ² ... 2.5 mm ² (with ferrule)
Connection cross section AWG	26 ... 14 (with ferrule)
Tightening torque	0.5 Nm ... 1.7 Nm (Fixing screws for panel mounting base)

Dimensions

Dimensional drawing	
Width	53 mm
Height	103 mm
Length	80.5 mm
Drill hole distance, horizontal	70 mm

HC-EVO-B06PT-BWSC-HL-M20-PLRBK - Connector set



1407710

<https://www.phoenixcontact.com/in/products/1407710>

Drill hole distance, vertical	32 mm
-------------------------------	-------

Installation dimensions

Width of the assembly cutout	35 mm
Length of the assembly cutout	52 mm

Material specifications

Material Protective cover	PA
Flammability rating according to UL 94	V0
Seal material Profile gasket	NBR
Seal material Flat gasket	NBR
Contact material	Copper alloy
Contact surface material	Ag
Contact carrier material	PC
Locking latch material	PA
Impact strength	IK09
Housing material	PA

Cable/line

External cable diameter	7 mm ... 13 mm
-------------------------	----------------

Mechanical properties

Mechanical data

Type of the screw connection	1x M20
Locking type	Latch
Insertion/withdrawal cycles	≥ 500

Environmental and real-life conditions

Ambient conditions

Degree of protection	IP66
	12 (UL 50e)
Impact strength	IK09
Ambient temperature (operation)	-40 °C ... 100 °C

Mounting

Assembly instructions	Connectors may only be operated when there is no load/the power is switched off. Can be used for solid wires and stranded wires with ferrule.
Connection method	Push-in connection

HC-EVO-B06PT-BWSC-HL-M20-PLRBK - Connector set

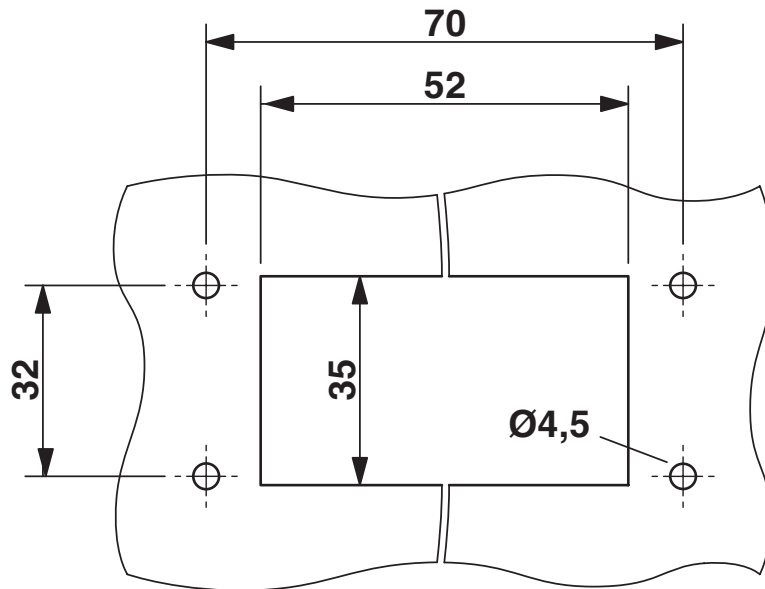


1407710

<https://www.phoenixcontact.com/in/products/1407710>

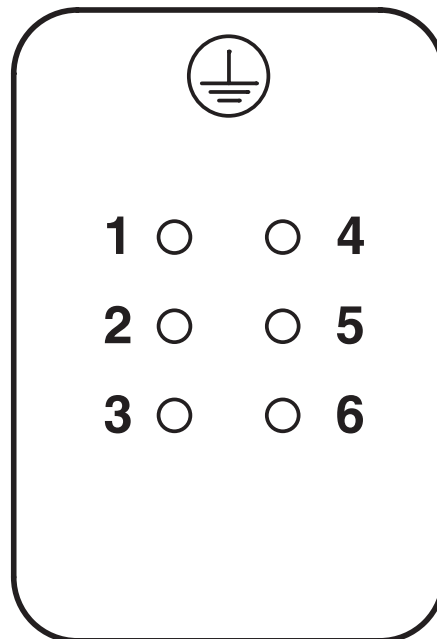
Drawings

Dimensional drawing



Mounting cutout

Schematic diagram



Pin assignment, connection side, socket

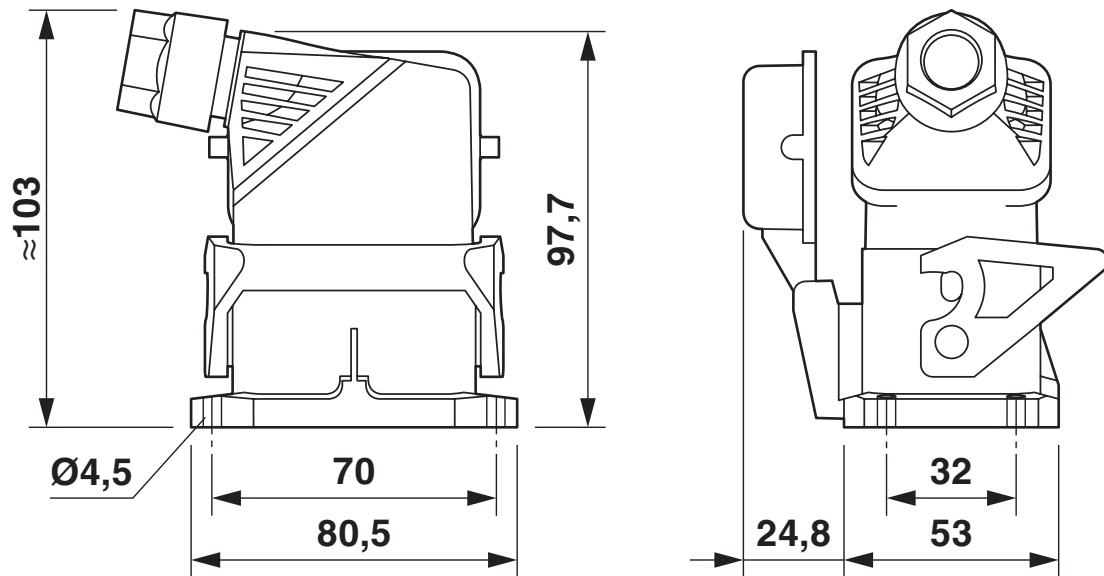
HC-EVO-B06PT-BWSC-HL-M20-PLRBK - Connector set



1407710

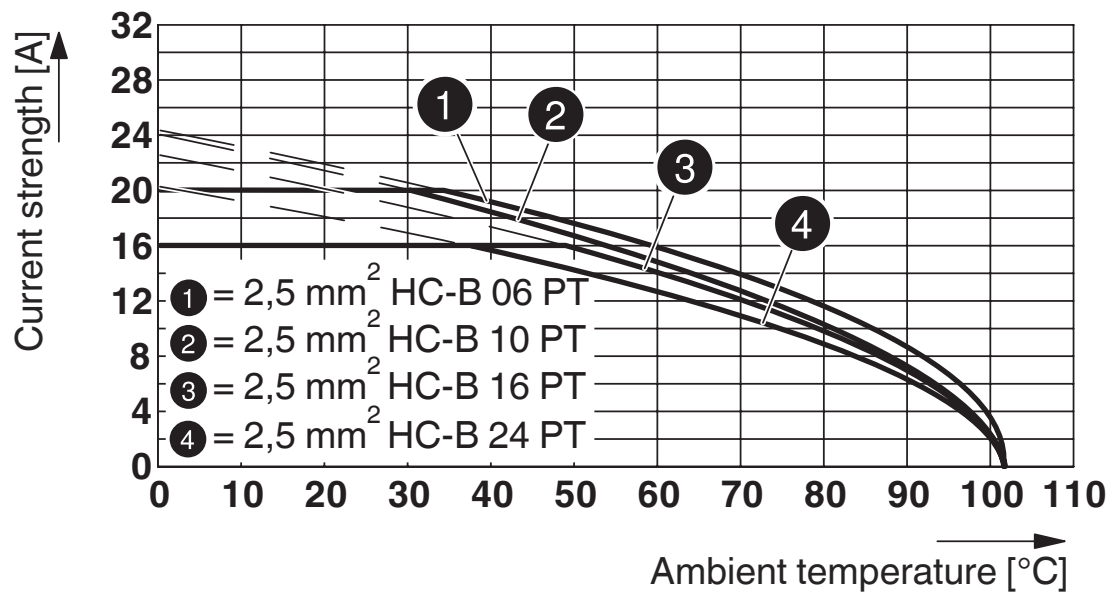
<https://www.phoenixcontact.com/in/products/1407710>

Dimensional drawing



Dimensional drawing

Diagram



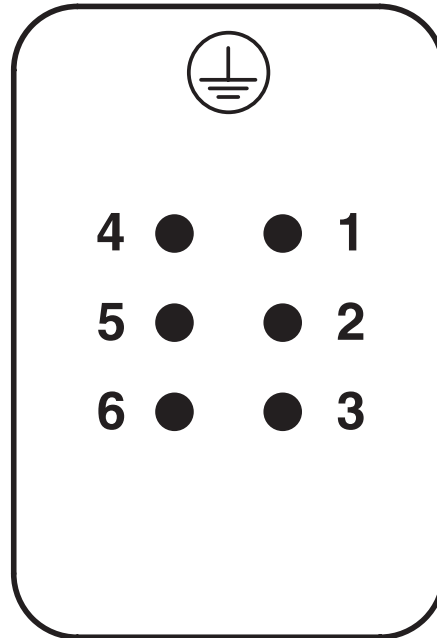
Derating diagram

HC-EVO-B06PT-BWSC-HL-M20-PLRBK - Connector set

1407710

<https://www.phoenixcontact.com/in/products/1407710>

Schematic diagram



Pin assignment, connection side, pin

HC-EVO-B06PT-BWSC-HL-M20-PLRBK - Connector set



1407710

<https://www.phoenixcontact.com/in/products/1407710>

Approvals



EAC

Approval ID: RU C-DE.AI30.B.01102



EAC

Approval ID: RU C-DE.BL08.B.00511

HC-EVO-B06PT-BWSC-HL-M20-PLRBK - Connector set



1407710

<https://www.phoenixcontact.com/in/products/1407710>

Classifications

ECLASS

ECLASS-11.0	27440101
ECLASS-12.0	27440113
ECLASS-13.0	27440113

ETIM

ETIM 8.0	EC002636
----------	----------

UNSPSC

UNSPSC 21.0	39121400
-------------	----------

HC-EVO-B06PT-BWSC-HL-M20-PLRBK - Connector set



1407710

<https://www.phoenixcontact.com/in/products/1407710>

Environmental Product Compliance

China RoHS	Environmentally friendly use period: unlimited = EFUP-e
	No hazardous substances above threshold values

HC-EVO-B06PT-BWSC-HL-M20-PLRBK - Connector set



1407710

<https://www.phoenixcontact.com/in/products/1407710>

Accessories

HC-B06-SL-PLBK - Housing brackets

1407697

<https://www.phoenixcontact.com/in/products/1407697>

Replacement single locking latch for HEAVYCON EVO housing type B6, PA



US-EMP (20X9) - Snap-in markers

0829439

<https://www.phoenixcontact.com/in/products/0829439>

Snap-in markers, Card, white, unlabeled, can be labeled with: BLUEMARK ID COLOR, BLUEMARK ID, THERMOMARK PRIME, THERMOMARK CARD 2.0, THERMOMARK CARD, mounting type: snapped, lettering field size: 20 x 9 mm, Number of individual labels: 70



Phoenix Contact 2023 © - all rights reserved

<https://www.phoenixcontact.com>

PHOENIX CONTACT (I) Pvt. Ltd.

A-58/2, Okhla Industrial Area, Phase - II, New Delhi-110 020

+91.1275.71420

info@phoenixcontact.co.in